

PRINCIPAL OF THE WORLD

IAN RASHKIN

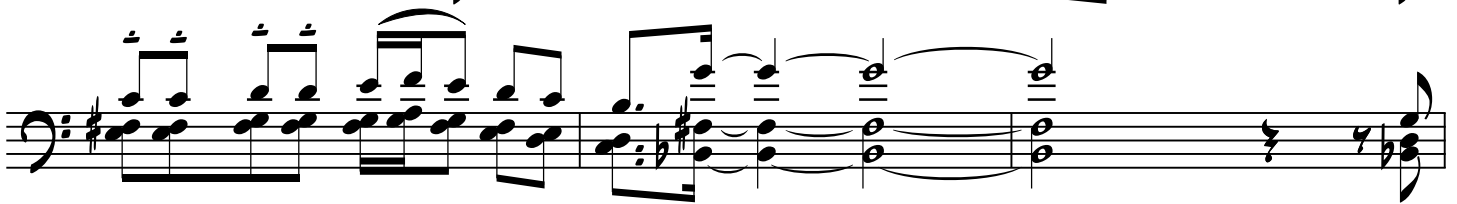
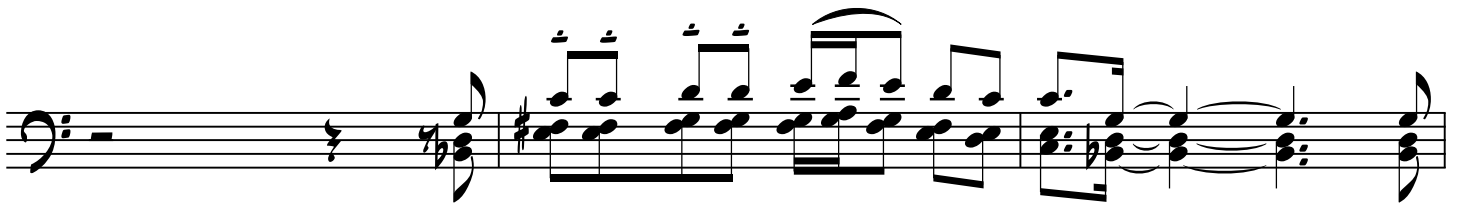
QUASI-CALYPSO, ♩ CA. 104

C7#11

BASS LINE AND CHORD CONTINUE THROUGHOUT SONG



(LOWER LINE(S) 2ND TIME ONLY)



FREE IMPROV, INDIVIDUALLY, TUTTI, OR AS DESIRED, OVER BASS LINE ON C7#11; OPTIONALLY ADD FIGURES SUCH AS EXAMPLES A, B, AND C BELOW, AS DESIRED

